

# Guide to Assembly & Usage

## BiGDUG Essentials Longspan Shelving

### Information

If in doubt, contact the supplier

Read this guide thoroughly before commencing assembly and retain for future reference

Before commencing assembly, unpack carefully and check that all components ordered are included

Assembly should be undertaken by a minimum of two competent people

**Tools:** Small rubber mallet and flat head screwdriver

Assess for floor fixing. Tall narrow bays may require this to ensure stability

We recommend products over 2000mm high are fixed to the wall where possible

### Caution

During assembly, ensure to:

Take care during assembly and in use, particularly when lifting or stretching & when using tools

Wear appropriate safety clothing – protective gloves and footwear are recommended

Build on a suitable level floor, which is strong enough to support the load and allow adequate working space

Dispose of packaging materials responsibly

### Warning

Rules for the safe use of shelving:

Ensure these instructions are retained for reference and that users are aware of the rules for safe use

Never climb on the structure or stand on the shelving

Do not lean or support ladders, steps, or other objects against shelving

Always use safety steps to reach high shelves

Do not use in damp or wet conditions

Load heavy items on the lower shelves & lighter items on the higher shelves

This product is designed for hand loading only

Ensure that the maximum load carrying capacities are not exceeded

Please refer to the loading information supplied for details



### COMPONENT CHECK LIST

Component	Quantity
<b>A</b> Upright	4 per bay
<b>B</b> Front & Back Beam	8 per bay
<b>C</b> Side Beam	8 per bay
<b>D</b> Centre Support	16 per bay
<b>E</b> MDF Board	4 per bay
<b>F</b> Foot	4 per bay

### Loading information

#### Shelf load capacities

Maximum permitted shelf capacities are based on UDL1. Please note that the bay capacity may limit the maximum load per shelf:

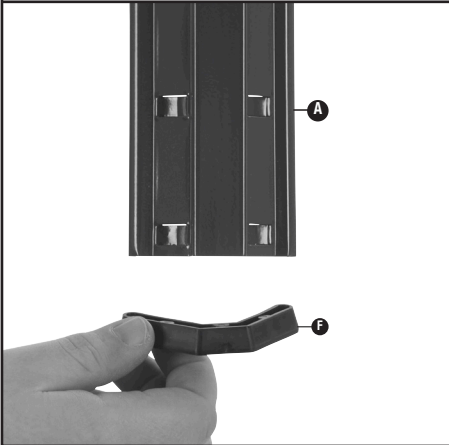
BiGDUG Garage Heavy-Duty Shelving		
Beam width mm	Load capacity per shelf	Maximum load per bay
2000 mm	500kg	2000kg
2400 mm	450kg	1800kg

IF YOU ARE IN ANY DOUBT REGARDING LOAD CAPACITIES, PLEASE CONTACT YOUR SUPPLIER

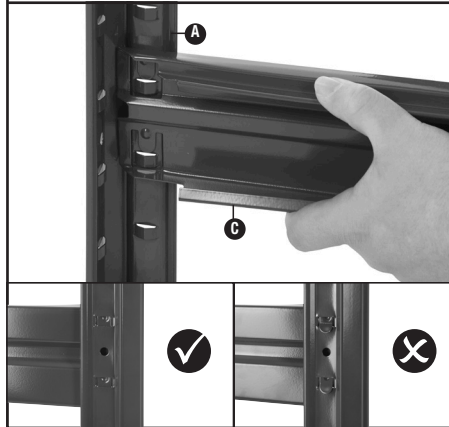
<sup>1</sup>UDL = Uniformly Distributed Load

# BiGDUG Essentials Longspan Shelving

- 1** Place a Foot **F** onto the base of all Uprights **A**.



- 2** Insert tabs on a Side Beam **C** into an Upright **A** at a preferred height. Knock into place using a rubber mallet.



- 3** Repeat step two until you have created two "ladder like frames".



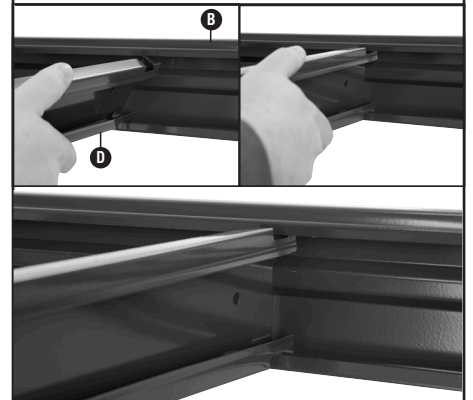
- 4** Join the two "ladder like frames" together using the longer Front & Back Beams **B**. Ensure all beams are positioned at the same height as the Side Beams **C**.



- 5** Add remaining Front & Back Beams **B** to the side frames to create the rest of the levels. Ensuring all beams are at the same height.



- 6** Insert 4 Centre Supports **D** to each shelf level and simply twist to lock into place.



- 7** Centre Support **D** can be adjusted along shelf level to allow for heavy loads.



- 8** Add MDF Boards **E** onto each level to complete your shelving bay.



- 9** ACCESSORIES ALSO AVAILABLE

We recommend fixing to a wall for maximum stability.

